



Noise Monitoring Result

Day Time (0700 - 1900hrs on normal weekdays)

Location: M1a - Footbridge at EX-Wanchai Harbour Road Sports Centre

Date	Time	Weather	Measurement Noise Level			Baseline Level	Construction Noise Level	Limit Level
			Leq	L10	L90	Leq	Leq	Leq
Unit: dB(A), (30-min)								
30/8/2017	09:45	Fine	74.5	76.6	71.6	72	71	75
5/9/2017	13:40	Cloudy	73.6	75.2	71.4	72	68	75
12/9/2017	14:20	Fine	75.1	76.9	72.0	72	72	75
21/9/2017	10:30	Cloudy	75.7	78.1	71.6	72	73	75
27/9/2017	13:35	Fine	76.9	79.1	73.4	72	75	75

Location: M2b - Noon-day gun area

Date	Time	Weather	Measurement Noise Level			Baseline Level	Construction Noise Level	Limit Level
			Leq	L10	L90	Leq	Leq	Leq
Unit: dB(A), (30-min)								
30/8/2017	10:30	Fine	67.4	68.9	65.6	68	67	75
5/9/2017	14:30	Cloudy	67.5	68.8	65.7	68	68	75
12/9/2017	13:25	Fine	67.3	69.1	65.1	68	67	75
21/9/2017	11:15	Fine	68.9	70.4	65.7	68	63	75
27/9/2017	14:25	Fine	66.8	68.3	64.4	68	67	75

Location: M3a - Tung Lo Wan Fire Station

Date	Time	Weather	Measurement Noise Level			Baseline Level	Construction Noise Level	Limit Level
			Leq	L10	L90	Leq	Leq	Leq
Unit: dB(A), (30-min)								
30/8/2017	14:05	Fine	65.1	66.4	63.6	69	65	75
5/9/2017	09:15	Cloudy	67.6	69.9	64.4	69	68	75
12/9/2017	09:00	Fine	65.2	66.8	63.0	69	65	75
21/9/2017	13:50	Fine	64.6	66.1	62.8	69	65	75
28/9/2017	10:00	Fine	65.3	66.4	63.8	69	65	75

Location: M4b - Victoria Centre

Date	Time	Weather	Measurement Noise Level			Baseline Noise Level	Construction Noise Level	Limit Level
			Leq	L10	L90	Leq	Leq	Leq
Unit: dB(A), (30min)								
30/8/2017	14:45	Fine	66.1	67.6	64.3	67	66	75
5/9/2017	09:55	Cloudy	67.4	68.5	65.3	67	51	75
12/9/2017	09:40	Fine	64.8	66.1	63.0	67	65	75
21/9/2017	14:30	Fine	65.9	67.0	64.6	67	66	75
27/9/2017	15:05	Fine	66.8	67.8	63.5	67	67	75

Location: M5b - City Garden

Date	Time	Weather	Measurement Noise Level			Baseline Level	Construction Noise Level	Limit Level
			Leq	L10	L90	Leq	Leq	Leq
Unit: dB(A), (30min)								
30/8/2017	15:30	Fine	71.9	73.0	70.0	68	70	75
5/9/2017	10:45	Cloudy	71.7	72.8	70.6	68	69	75
12/9/2017	10:20	Fine	72.5	74.4	69.6	68	71	75
21/9/2017	15:15	Fine	69.6	70.9	68.1	68	64	75
28/9/2017	10:50	Fine	71.6	73.0	69.6	68	69	75

Location: M6 - HK Baptist Church Henrietta Secondary School

Date	Time	Weather	Measurement Noise Level			Baseline Level	Construction Noise Level	Limit Level
			Leq	L10	L90	Leq	Leq	Leq
Unit: dB(A), (30-min)								
30/8/2017	16:06	Fine	66.5	67.8	64.7	71	67	70
5/9/2017	11:20	Cloudy	66.5	68.5	62.4	71	67	70
12/9/2017	10:55	Fine	66.7	68.1	64.8	71	67	70
21/9/2017	15:50	Fine	65.9	67.6	63.9	71	66	70
28/9/2017	11:25	Fine	65.5	67.1	63.4	71	66	70



Noise Monitoring Result

Day Time (0700 - 1900hrs on normal weekdays)

Location: M7e - International Finance Centre (Eastern End of Podium) (Reference Station)

Date	Time	Weather	Measurement Noise Level			Baseline Level	Construction Noise Level	Limit Level
			Leq	L10	L90	Leq	Leq	Leq
Unit: dB(A), (30-min)								
29/8/2017	10:15	Fine	73.0	77.0	68.1	67	72	N/A
4/9/2017	14:05	Cloudy	68.4	71.1	65.6	67	63	N/A
11/9/2017	14:30	Fine	69.3	70.4	67.8	67	66	N/A
18/9/2017	14:35	Fine	66.3	68.1	63.1	67	66	N/A
26/9/2017	13:45	Fine	65.9	68.3	64.7	67	66	N/A

Location: M7w - International Finance Centre (Western End of Podium)

Date	Time	Weather	Measurement Noise Level			Baseline Level	Construction Noise Level	Limit Level
			Leq	L10	L90	Leq	Leq	Leq
Unit: dB(A), (30-min)								
29/8/2017	09:35	Fine	67.2	68.9	64.1	69	67	75
4/9/2017	14:40	Cloudy	67.1	69.0	64.0	69	67	75
11/9/2017	15:05	Fine	67.1	68.7	64.3	69	67	75
18/9/2017	15:10	Fine	64.8	66.2	62.6	69	65	75
26/9/2017	13:10	Fine	66.6	68.2	64.0	69	67	75

Location: M8 - City Hall

Date	Time	Weather	Measurement Noise Level			Baseline Level	Construction Noise Level	Limit Level
			Leq	L10	L90	Leq	Leq	Leq
Unit: dB(A), (30-min)								
29/8/2017	11:15	Fine	58.7	60.7	56.1	64	59	70
4/9/2017	10:05	Cloudy	60.6	63.0	57.2	64	61	70
11/9/2017	13:45	Fine	58.6	60.4	56.1	64	59	70
21/9/2017	09:45	Cloudy	59.0	61.2	55.7	64	59	70
26/9/2017	14:45	Fine	59.1	61.3	55.4	64	59	70



Noise Monitoring Result

Day Time (0700 - 1900hrs on normal weekdays)

Location: M1a - Footbridge at EX-Wanchai Harbour Road Sports Centre

Date	Time	Weather	Measurement Noise Level			Baseline Level	Construction Noise Level	Limit Level
			Leq	L10	L90	Leq	Leq	Leq
Unit: dB(A), (30-min)								
6/10/2017	10:25	Fine	74.7	76.7	71.6	72	71	75
13/10/2017	10:10	Fine	75.4	77.0	72.8	72	73	75
19/10/2017	13:15	Fine	76.5	78.2	74.2	72	74	75
23/10/2017	10:35	Fine	75.8	77.9	72.3	72	73	75

Location: M2b - Noon-day gun area

Date	Time	Weather	Measurement Noise Level			Baseline Level	Construction Noise Level	Limit Level
			Leq	L10	L90	Leq	Leq	Leq
Unit: dB(A), (30-min)								
6/10/2017	11:10	Fine	66.5	68.0	64.7	68	67	75
13/10/2017	10:55	Fine	68.8	71.1	65.9	68	63	75
19/10/2017	14:10	Fine	67.5	68.1	65.0	68	68	75
24/10/2017	14:00	Fine	67.4	69.2	65.3	68	67	75

Location: M3a - Tung Lo Wan Fire Station

Date	Time	Weather	Measurement Noise Level			Baseline Level	Construction Noise Level	Limit Level
			Leq	L10	L90	Leq	Leq	Leq
Unit: dB(A), (30-min)								
6/10/2017	13:00	Fine	68.3	70.6	63.9	69	68	75
11/10/2017	14:00	Fine	65.5	66.8	63.6	69	66	75
17/10/2017	09:10	Cloudy	65.0	66.4	62.6	69	65	75
24/10/2017	08:55	Fine	65.2	66.6	62.7	69	65	75

Location: M4b - Victoria Centre

Date	Time	Weather	Measurement Noise Level			Baseline Noise Level	Construction Noise Level	Limit Level
			Leq	L10	L90	Leq	Leq	Leq
Unit: dB(A), (30min)								
6/10/2017	13:40	Fine	66.6	68.1	64.6	67	67	75
11/10/2017	14:40	Fine	67.7	69.4	65.3	67	57	75
17/10/2017	09:50	Cloudy	66.3	67.9	64.1	67	66	75
24/10/2017	09:35	Fine	65.5	66.8	63.7	67	66	75

Location: M5b - City Garden

Date	Time	Weather	Measurement Noise Level			Baseline Level	Construction Noise Level	Limit Level
			Leq	L10	L90	Leq	Leq	Leq
Unit: dB(A), (30min)								
6/10/2017	14:15	Fine	72.6	73.5	71.3	68	71	75
11/10/2017	15:25	Fine	70.2	71.2	68.9	68	66	75
17/10/2017	10:30	Cloudy	71.6	72.8	70.0	68	69	75
24/10/2017	10:30	Fine	70.8	71.7	69.0	68	68	75

Location: M6 - HK Baptist Church Henrietta Secondary School

Date	Time	Weather	Measurement Noise Level			Baseline Level	Construction Noise Level	Limit Level
			Leq	L10	L90	Leq	Leq	Leq
Unit: dB(A), (30-min)								
6/10/2017	15:00	Fine	66.5	67.7	64.3	71	67	70
11/10/2017	16:00	Fine	66.2	68.6	64.5	71	66	70
17/10/2017	11:10	Cloudy	68.0	69.2	66.5	71	68	70
24/10/2017	11:05	Fine	67.6	68.7	66.4	71	68	70



Noise Monitoring Result

Day Time (0700 - 1900hrs on normal weekdays)

Location: M7e - International Finance Centre (Eastern End of Podium) (Reference Station)

Date	Time	Weather	Measurement Noise Level			Baseline Level	Construction Noise Level	Limit Level
			Leq	L10	L90	Leq	Leq	Leq
Unit: dB(A), (30-min)								
3/10/2017	14:10	Fine	70.3	73.4	65.6	67	68	N/A
10/10/2017	14:35	Fine	67.7	69.2	65.3	67	60	N/A
17/10/2017	13:50	Cloudy	66.1	67.8	63.2	67	66	N/A
23/10/2017	13:30	Fine	68.6	70.7	64.2	67	64	N/A

Location: M7w - International Finance Centre (Western End of Podium)

Date	Time	Weather	Measurement Noise Level			Baseline Level	Construction Noise Level	Limit Level
			Leq	L10	L90	Leq	Leq	Leq
Unit: dB(A), (30-min)								
3/10/2017	14:45	Fine	70.3	72.7	64.9	69	63	75
10/10/2017	15:10	Fine	67.1	70.7	63.8	69	67	75
17/10/2017	14:35	Cloudy	69.9	71.4	66.5	69	60	75
23/10/2017	14:05	Fine	65.4	66.9	63.2	69	65	75

Location: M8 - City Hall

Date	Time	Weather	Measurement Noise Level			Baseline Level	Construction Noise Level	Limit Level
			Leq	L10	L90	Leq	Leq	Leq
Unit: dB(A), (30-min)								
3/10/2017	15:40	Fine	62.2	63.8	56.2	64	62	70
13/10/2017	14:15	Fine	60.1	62.0	56.9	64	60	70
17/10/2017	15:15	Cloudy	60.4	61.8	56.5	64	60	70
23/10/2017	14:50	Fine	60.4	61.9	57.6	64	60	70



Noise Monitoring Result

Day Time (0700 - 1900hrs on normal weekdays)

Location: M1a - Footbridge at EX-Wanchai Harbour Road Sports Centre

Date	Time	Weather	Measurement Noise Level			Baseline Level	Construction Noise Level	Limit Level
			Leq	L10	L90	Leq	Leq	Leq
Unit: dB(A), (30-min)								
3/11/2017	13:10	Fine	82.8	84.0	75.6	72	82	75
9/11/2017	10:05	Fine	74.6	76.4	72.2	72	71	75
17/11/2017	09:55	Fine	76.9	79.1	73.6	72	75	75
22/11/2017	10:50	Fine	78.0	80.0	74.4	72	77	75

Location: M2b - Noon-day gun area

Date	Time	Weather	Measurement Noise Level			Baseline Level	Construction Noise Level	Limit Level
			Leq	L10	L90	Leq	Leq	Leq
Unit: dB(A), (30-min)								
3/11/2017	10:00	Fine	67.7	69.0	66.1	68	51	75
9/11/2017	10:50	Fine	67.0	68.5	65.0	68	67	75
17/11/2017	10:35	Fine	66.6	68.2	64.9	68	67	75
22/11/2017	08:10	Fine	68.5	70.3	66.1	68	61	75

Location: M3a - Tung Lo Wan Fire Station

Date	Time	Weather	Measurement Noise Level			Baseline Level	Construction Noise Level	Limit Level
			Leq	L10	L90	Leq	Leq	Leq
Unit: dB(A), (30-min)								
31/10/2017	09:15	Fine	65.5	67.1	63.3	69	66	75
9/11/2017	13:05	Fine	65.7	67.2	63.9	69	66	75
15/11/2017	09:20	Fine	64.5	66.2	62.3	69	65	75
21/11/2017	09:40	Fine	64.3	66.1	61.9	69	64	75

Location: M4b - Victoria Centre

Date	Time	Weather	Measurement Noise Level			Baseline Noise Level	Construction Noise Level	Limit Level
			Leq	L10	L90	Leq	Leq	Leq
Unit: dB(A), (30min)								
31/10/2017	09:55	Fine	68.0	69.7	65.0	67	60	75
9/11/2017	13:45	Fine	68.3	69.3	65.2	67	61	75
15/11/2017	10:00	Fine	65.0	66.7	62.4	67	65	75
21/11/2017	08:45	Fine	65.5	66.1	62.2	67	66	75

Location: M5b - City Garden

Date	Time	Weather	Measurement Noise Level			Baseline Level	Construction Noise Level	Limit Level
			Leq	L10	L90	Leq	Leq	Leq
Unit: dB(A), (30min)								
31/10/2017	10:40	Fine	73.4	74.7	71.0	68	72	75
9/11/2017	14:30	Fine	70.2	71.3	68.8	68	66	75
15/11/2017	10:45	Fine	70.9	72.2	69.4	68	68	75
21/11/2017	10:30	Fine	68.7	69.9	65.7	68	60	75

Location: M6 - HK Baptist Church Henrietta Secondary School

Date	Time	Weather	Measurement Noise Level			Baseline Level	Construction Noise Level	Limit Level
			Leq	L10	L90	Leq	Leq	Leq
Unit: dB(A), (30-min)								
31/10/2017	11:15	Fine	67.9	69.2	66.2	71	68	70
9/11/2017	15:10	Fine	67.5	68.7	66.1	71	68	70
15/11/2017	11:20	Fine	68.4	69.5	67.0	71	68	70
21/11/2017	11:10	Fine	67.6	68.9	66.0	71	68	70



Noise Monitoring Result

Day Time (0700 - 1900hrs on normal weekdays)

Location: M7e - International Finance Centre (Eastern End of Podium) (Reference Station)

Date	Time	Weather	Measurement Noise Level			Baseline Level	Construction Noise Level	Limit Level
			Leq	L10	L90	Leq	Leq	Leq
Unit: dB(A), (30-min)								
31/10/2017	14:55	Fine	69.6	70.5	65.0	67	66	N/A
6/11/2017	13:20	Fine	75.1	78.6	67.2	67	74	N/A
14/11/2017	14:00	Fine	66.1	67.7	63.2	67	66	N/A
21/11/2017	14:50	Fine	69.5	72.7	65.1	67	66	N/A

Location: M7w - International Finance Centre (Western End of Podium)

Date	Time	Weather	Measurement Noise Level			Baseline Level	Construction Noise Level	Limit Level
			Leq	L10	L90	Leq	Leq	Leq
Unit: dB(A), (30-min)								
31/10/2017	15:30	Fine	65.8	66.9	62.6	69	66	75
6/11/2017	13:55	Fine	66.8	68.1	64.3	69	67	75
14/11/2017	14:35	Fine	65.5	67.1	62.6	69	66	75
21/11/2017	15:25	Fine	65.5	67.1	63.5	69	66	75

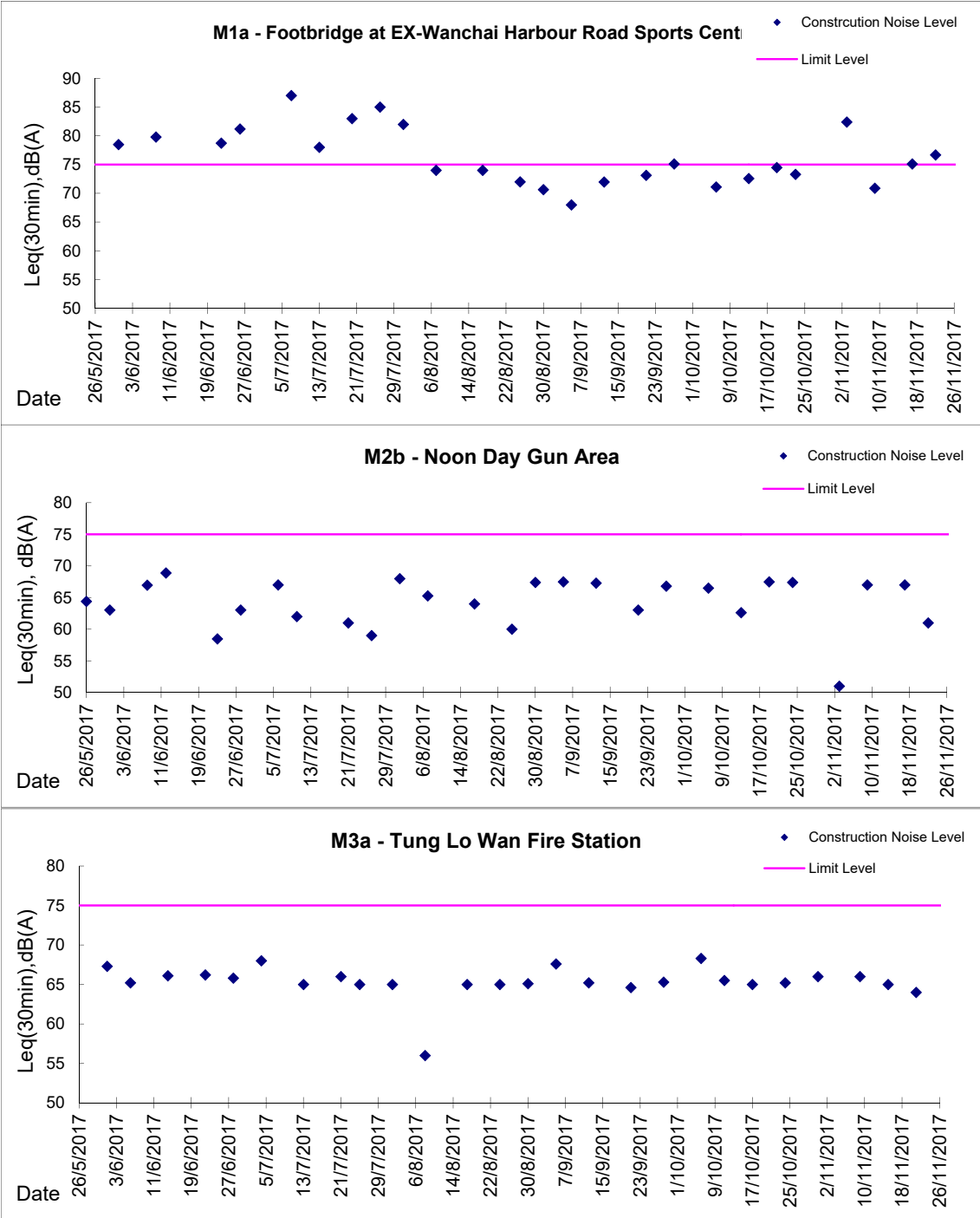
Location: M8 - City Hall

Date	Time	Weather	Measurement Noise Level			Baseline Level	Construction Noise Level	Limit Level
			Leq	L10	L90	Leq	Leq	Leq
Unit: dB(A), (30-min)								
31/10/2017	14:00	Fine	59.5	61.6	56.3	64	60	70
6/11/2017	14:45	Fine	59.7	61.9	56.0	64	60	70
16/11/2017	15:30	Fine	67.3	69.7	63.0	64	65	70
21/11/2017	13:50	Fine	64.9	66.9	60.6	64	58	70



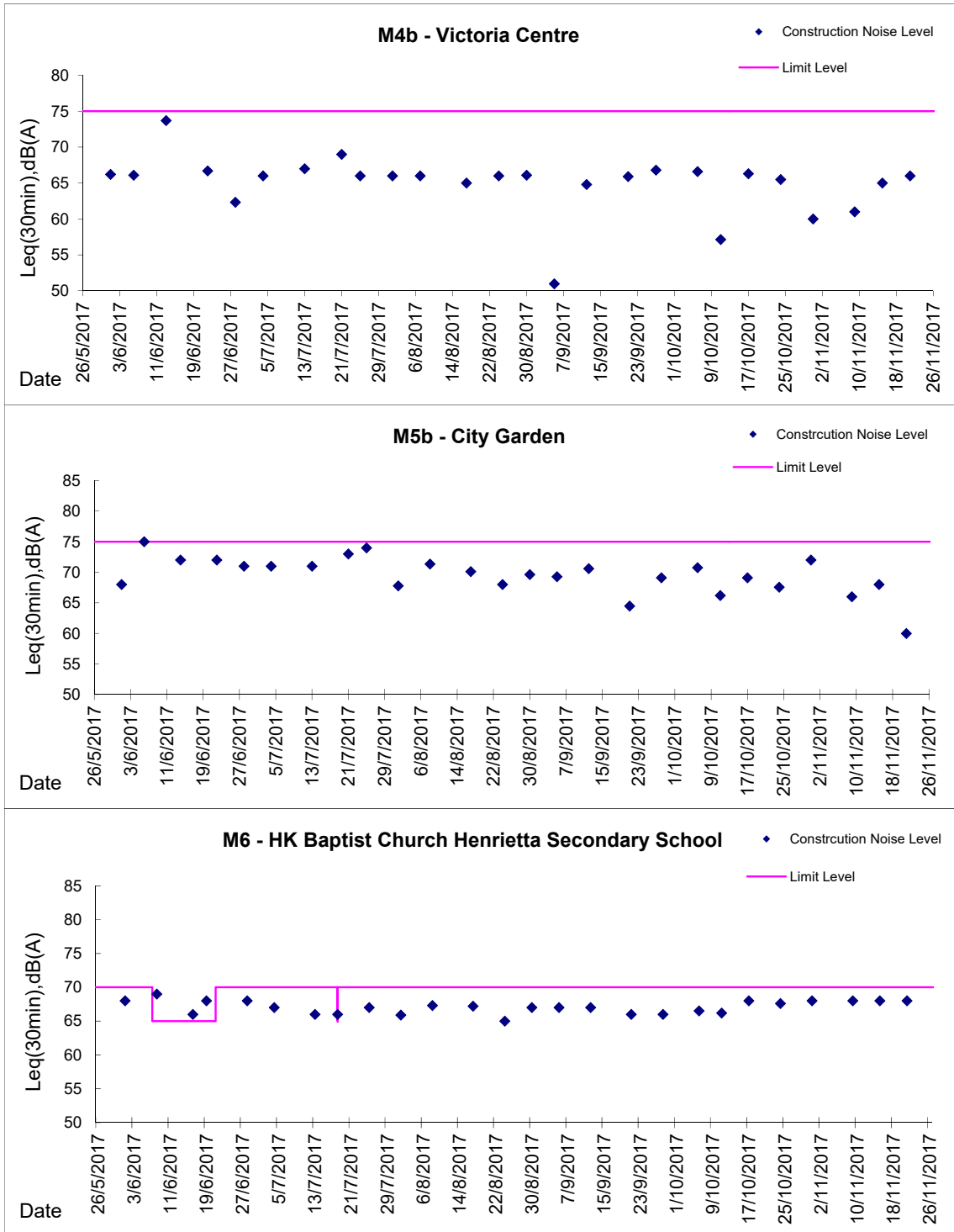
Graphic Presentation of Noise Monitoring Result

Day Time (0700 - 1900hrs on normal weekdays)



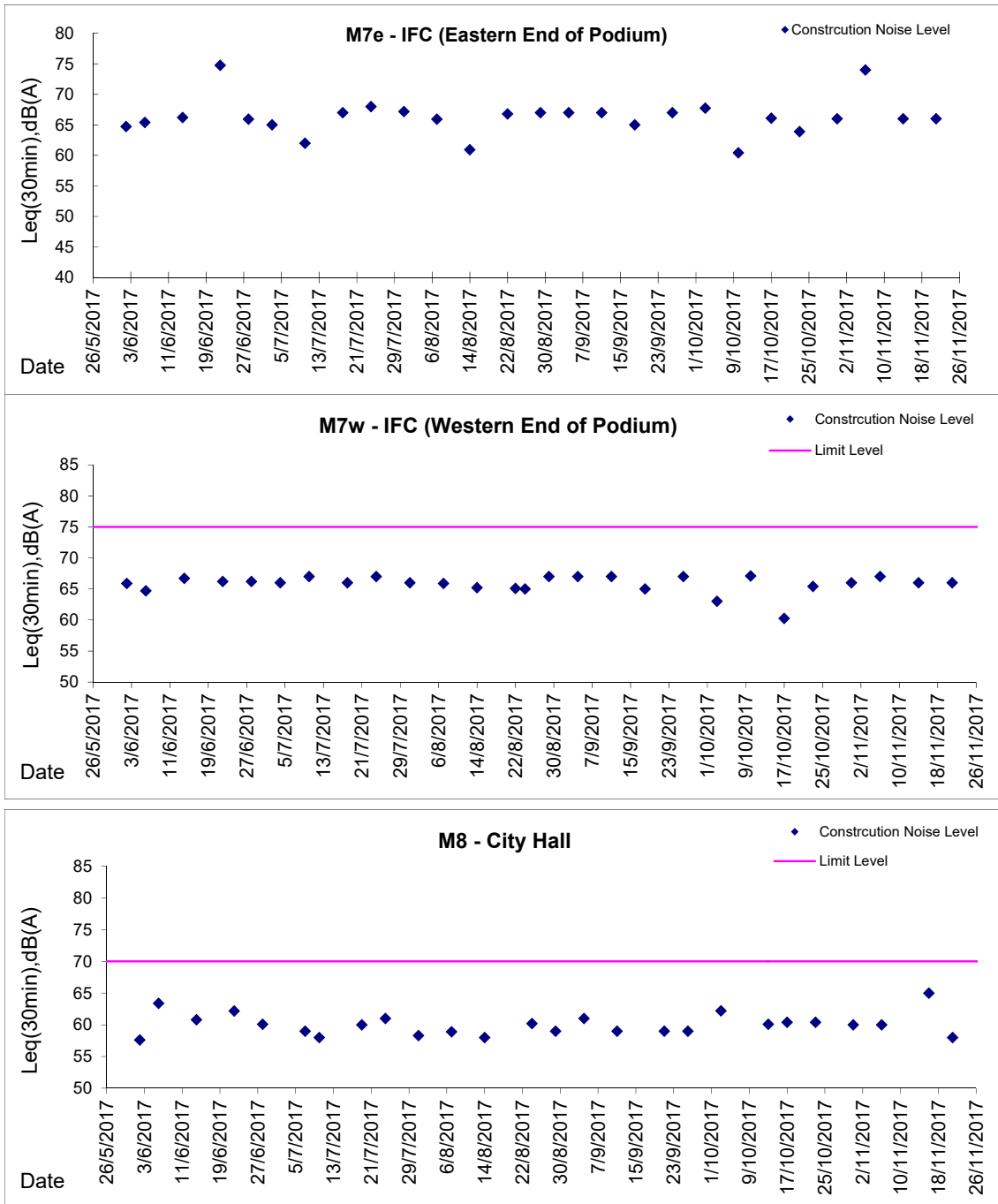
Graphic Presentation of Noise Monitoring Result

Day Time (0700 - 1900hrs on normal weekdays)



Graphic Presentation of Noise Monitoring Result

Day Time (0700 - 1900hrs on normal weekdays)



* Remark: M7e - IFC (Eastern End of Podium) is a reference monitoring station